



RE/MAX
North

17 Aspin Lane, Manchester, M4 4GR

£1,600 Per month





RE/MAX

£1,600 Per month

17 Aspin Lane

Manchester, M4 4GR

- Two Double Bedroom, Two Bathroom Corner Apartment
- Furnished or Unfurnished — Available on Request
- 24-Hour Concierge Service
- Private Dining Room & Communal Terrace
- Within Walking Distance of Victoria Station & the Northern Quarter
- 11th Floor with Stunning Parkside Views
- Full-Height Feature Windows to Open Plan Living Area
- State-of-the-Art Residents' Gym
- Ideal for Young Professionals

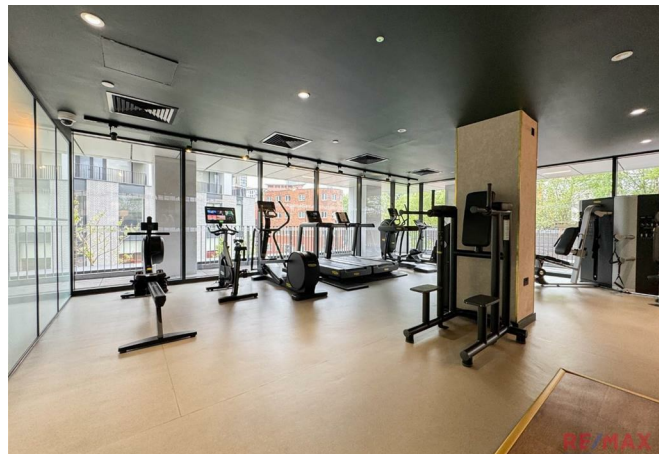
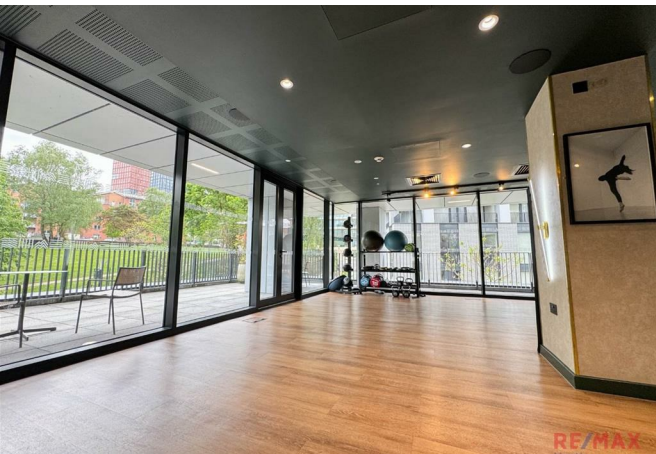
Available now. This exceptional two bedroom, two bathroom corner apartment is situated on the 11th floor of The Gate at MeadowSide, offering breathtaking parkside views across Angel Meadow — Manchester city centre's largest green space.

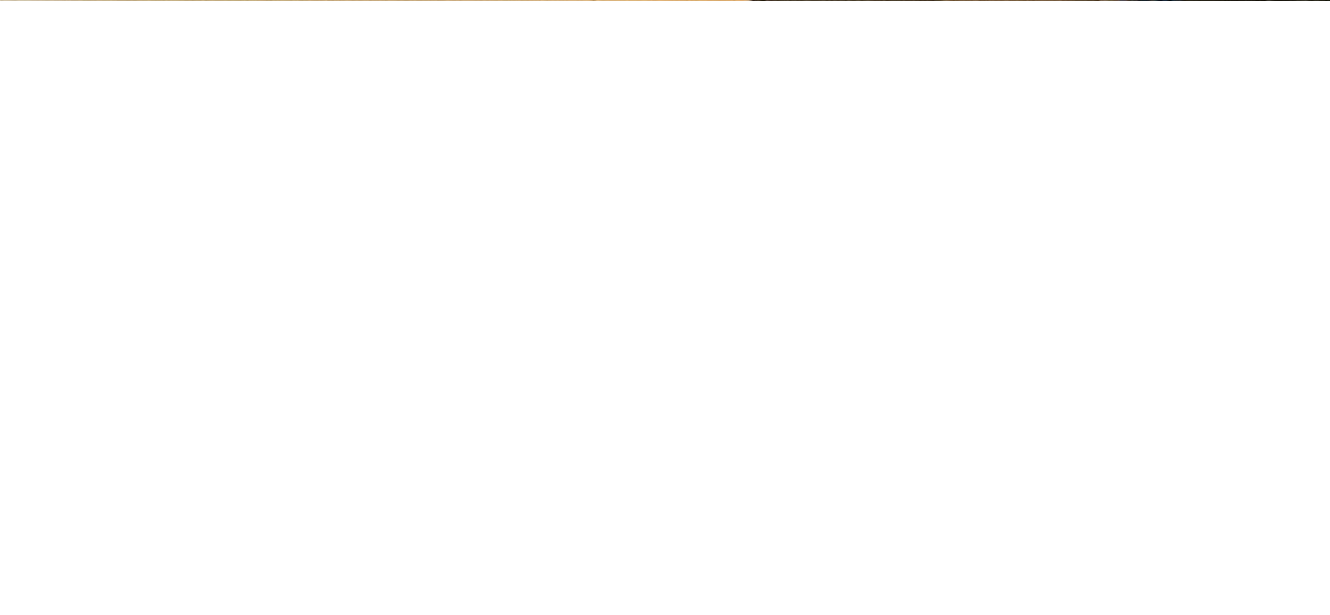
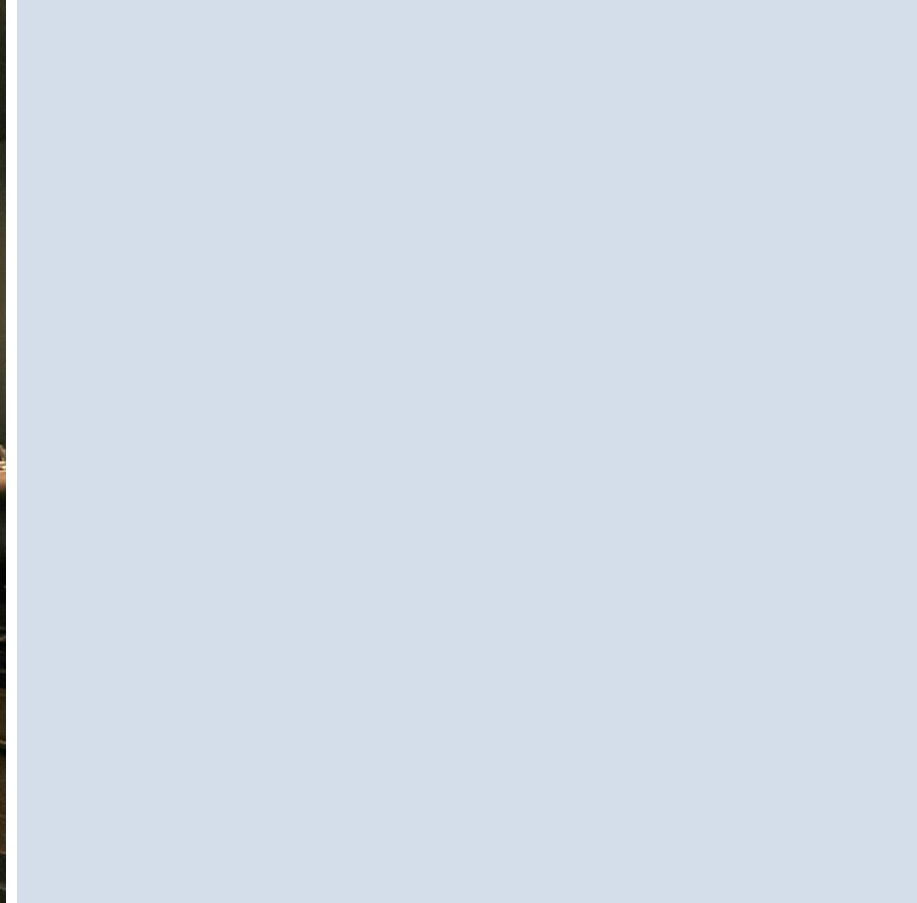
The apartment itself is presented in fantastic condition and benefits from a highly desirable corner position, flooding the property with natural light through full-height feature windows. The generous open plan kitchen, dining and living area is perfect for entertaining, with integrated appliances throughout including oven, induction hob, dishwasher and fridge freezer. Both double bedrooms benefit from built-in wardrobes, with the master bedroom served by its own en-suite shower room and a further main bathroom.

Furnishing is available on request, making this an ideal home for young professionals looking for flexibility. Residents at MeadowSide enjoy access to a state-of-the-art gym, 24-hour concierge service, private dining room available to hire, and a stunning communal terrace. Please note there is no parking included with this apartment. Perfectly positioned for city centre living, with Victoria Station, the Arndale Shopping Centre and the vibrant bars and restaurants of the Northern Quarter all within easy walking distance.

Please enquire now to arrange your viewing.

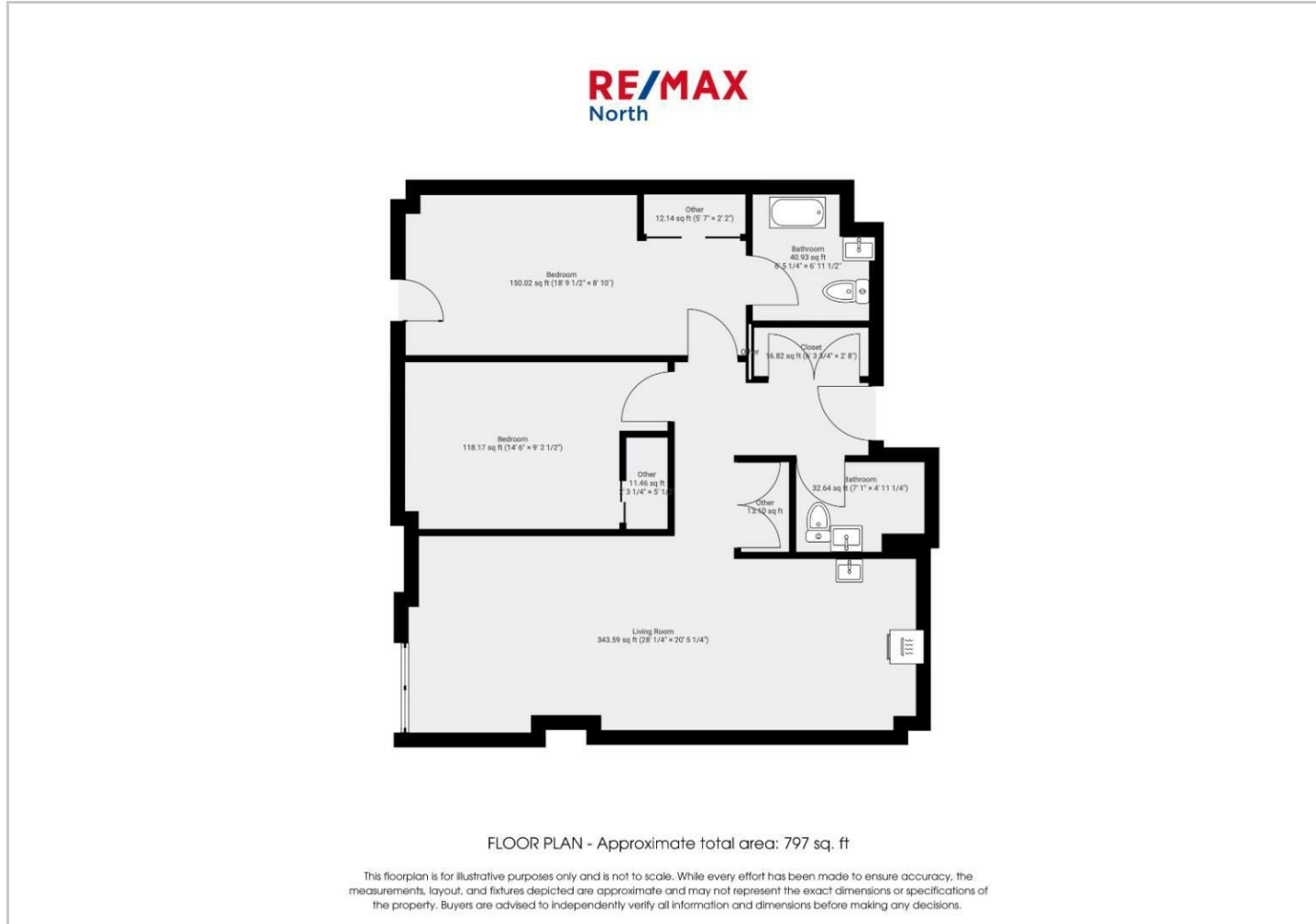
£1,650 pcm







Floor Plans



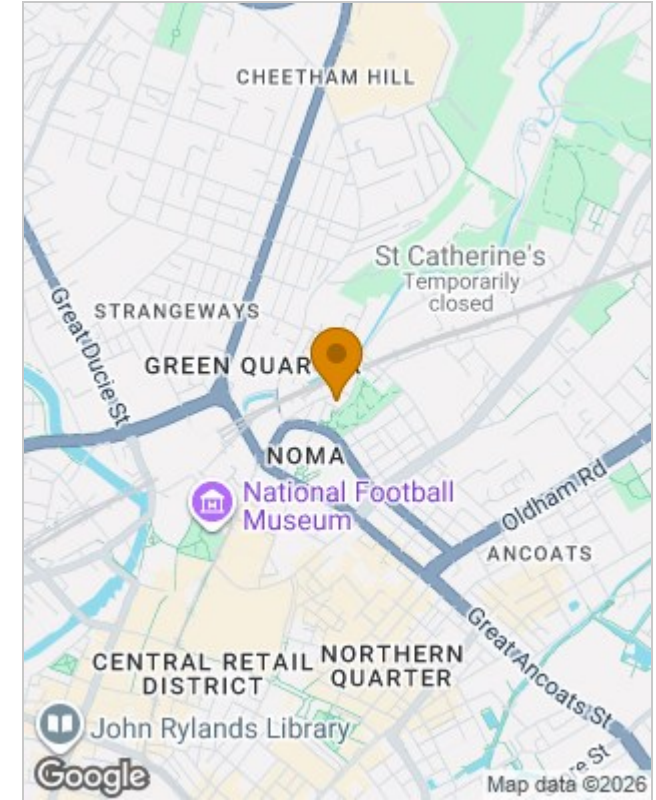
Viewing

Please contact our RE/MAX North Sales Office on +44 (0) 1618 040807 if you wish to arrange a viewing appointment for this property or require further information.

The particulars are set out as a general outline only for the guidance of intended purchasers or lessees, and do not constitute, any part of a contract. Nothing in these particulars shall be deemed to be a statement that the property is in good structural condition or otherwise nor that any of the services, appliances, equipment or facilities are in good working order. Purchasers should satisfy themselves of this prior to purchasing.

94 Phoebe Street, Salford, Greater Manchester, M5 3PH
Tel: +44 (0) 1618 040807 Email: remax.north@remax.co.uk remax.co.uk

Location Map



Energy Performance Graph

